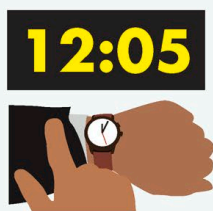


# 14 Vocabulary

## 14.1 TRAVEL



late



on time



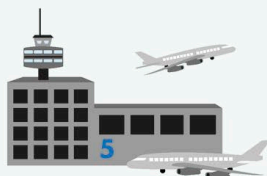
pack your bags



luggage



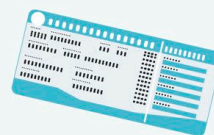
arrive at the airport



terminal



check-in



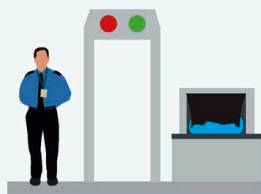
boarding card



flight



hand luggage



security



delay



board a plane



fly in a plane



land at the airport



passport control



miss a flight



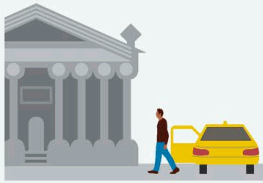
runway



set off on a journey



road trip



visit a museum



go sightseeing



get on a bus



get off a bus



hotel



apartment



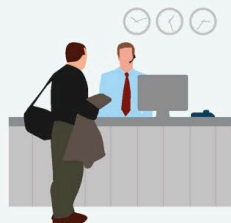
hostel



cruise



arrive at a hotel



reception



stay in a hotel



leave a hotel

